

GMC-MS45 Sealed Magnetic Catch

Features

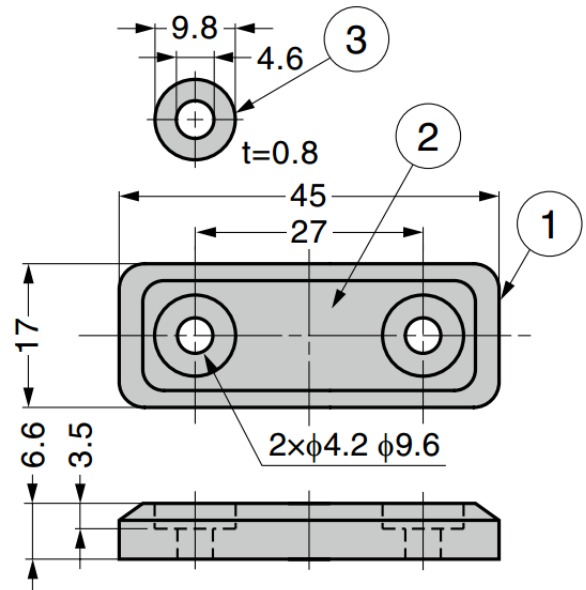
- Body covered with silicon rubber reduces noise during door closure
- Small body with strong magnetic force (neodymium magnet)
- Washer fitted in the body fixing hole prevents silicone rubber from tearing when screwed
- Larger size and stronger magnetic force option **GMC-MS50** also available

Notes

- Do not use in strong acid and strong alkaline environment
- Do not use in contact with steam, hot water and water
- Max. temperature: 80°C
- Do not scrape strongly, as damaged magnetic surface may tear. Recommended to use flat counter plates.
- Recommended counter plates sold separately: **GMC-JMP45**, **GAS-68**, or **GMC-JM49**

Recommended Screws

- Truss head screw M4



No.	Part Name	Material	Finish / Colour
①	Body	Silicone Rubber (Q)	Light Grey, Dark Grey
②	Magnet	Neodymium	Nickel
③	Washer	Stainless Steel (SUS304)	Plain

Body

Part No.	Colour	Magnetic Force	
GMC-MS45LGR	Light Grey	19.6 N	2 kg
GMC-MS45DGR	Dark Grey		

Counter Plates (Sold Separately)

Part No.
GMC-JMP45WT
GMC-JMP45BL
GAS-68
GMC-JM49